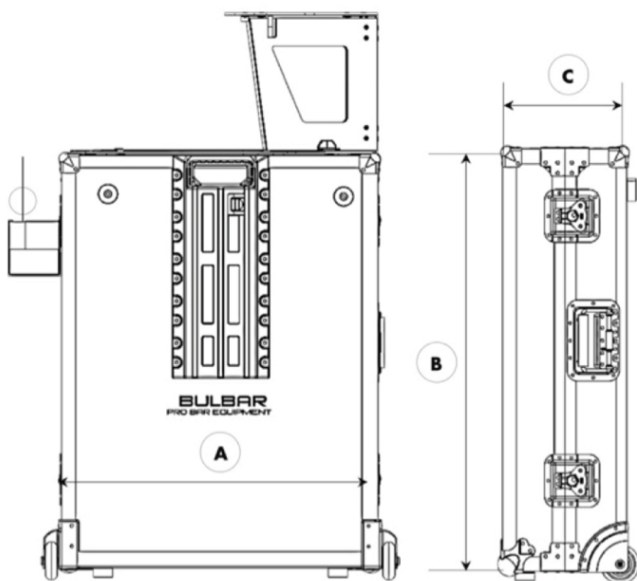
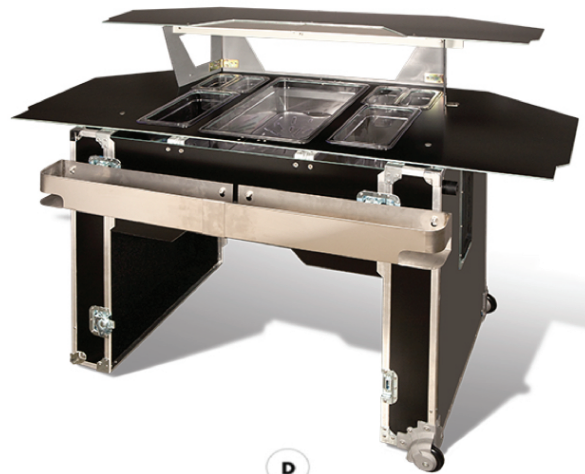


# Dimensions outer MODEL: GH020X

## PORTABLE SUITCASE BAR

UNIT	A	B	C	D
(IN)	24.41	32.28	11.02	54.30
(MM)	620	820	280	1380



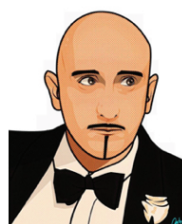
### SERVICE CAPACITY 20-100

- Delivery & Setup - 2-4 hours service
- Cocktail Bartender - Gin Ambassador
- Glassware or Plastic disposables
- Boutique G&Ts & Ginspired cocktails
- All stock, mixers, ice & garnishes
- Minimum spend £500 POA
- 5 Litre Slushy machine hire (add £50)

### COMPANY BRANDING POA



**DRY HIRE ONLY**  
**SUITCASE BAR DAY HIRE £150**  
**GLASSWARE HIRE .75P PER ITEM**  
**EXCLUDES DELIVERY CHARGES**



**Carl Hawkins**  
 GIN Raconteur | GINSPIRED EVENTS  
 07747861486 carl@thegingleman.com  
 www.thegingleman.com